

WHAT IS YOUR RETURN ON INVESTMENT FROM **YOUR PUBLIC LIBRARY?**

Illinois Heartland Library System Libraries

WITH YOUR LIBRARY CARD, YOU CAN ACCESS

Data from the Institute of Museum & Library Services.

33.3M
audio materials



35.9M
print materials



65.9M
ebooks

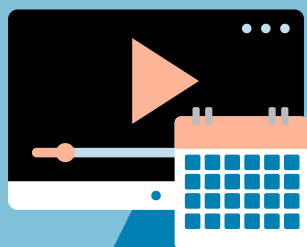


7.5M
video materials



These public libraries cost an average of
\$45 per capita each year.¹

That's about **3 months of an ad-free streaming service** or **3 new books.***



= **\$45** =



Illinois Heartland Library System
IMAGINING TOMORROW - DELIVERING POSSIBILITIES TODAY

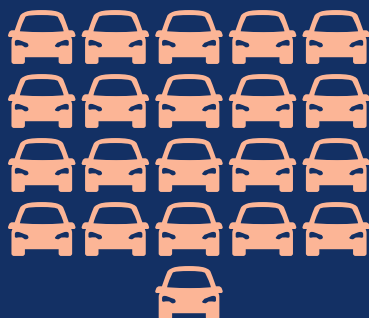
¹Data from the Institute of Library & Museum Services.

*Costs based on average hardback book and monthly streaming service prices.

WHAT IS YOUR RETURN ON INVESTMENT FROM YOUR PUBLIC LIBRARY?

In a year, the average central or southern Illinoisan with a library card will...¹

MAKE **21**



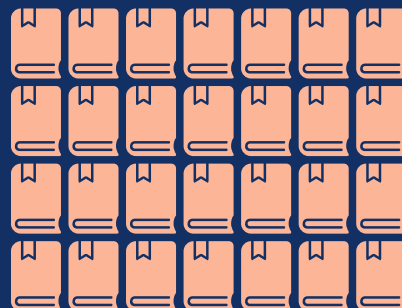
LIBRARY VISITS

ATTEND **2**



LIBRARY
PROGRAMS

BORROW **28**



LIBRARY ITEMS

¹Data from the Institute of Library & Museum Services.

LIBRARIES SUPPORT OUR FIRST-AMENDMENT RIGHTS



**Free Speech &
Expression**



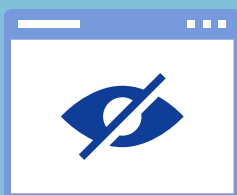
**Free Press &
Publishers**



**Free Access to
Information**



**Free Assembly &
Association**



If a book or program offends you, remember that libraries serve everyone. Removing library resources for partisan or religious reasons restricts access to information, limiting free speech and intellectual freedom for others.

ASK YOUR LOCAL LIBRARY HOW YOU CAN SUPPORT THEM TODAY!



Illinois Heartland Library System
IMAGINING TOMORROW - DELIVERING POSSIBILITIES TODAY