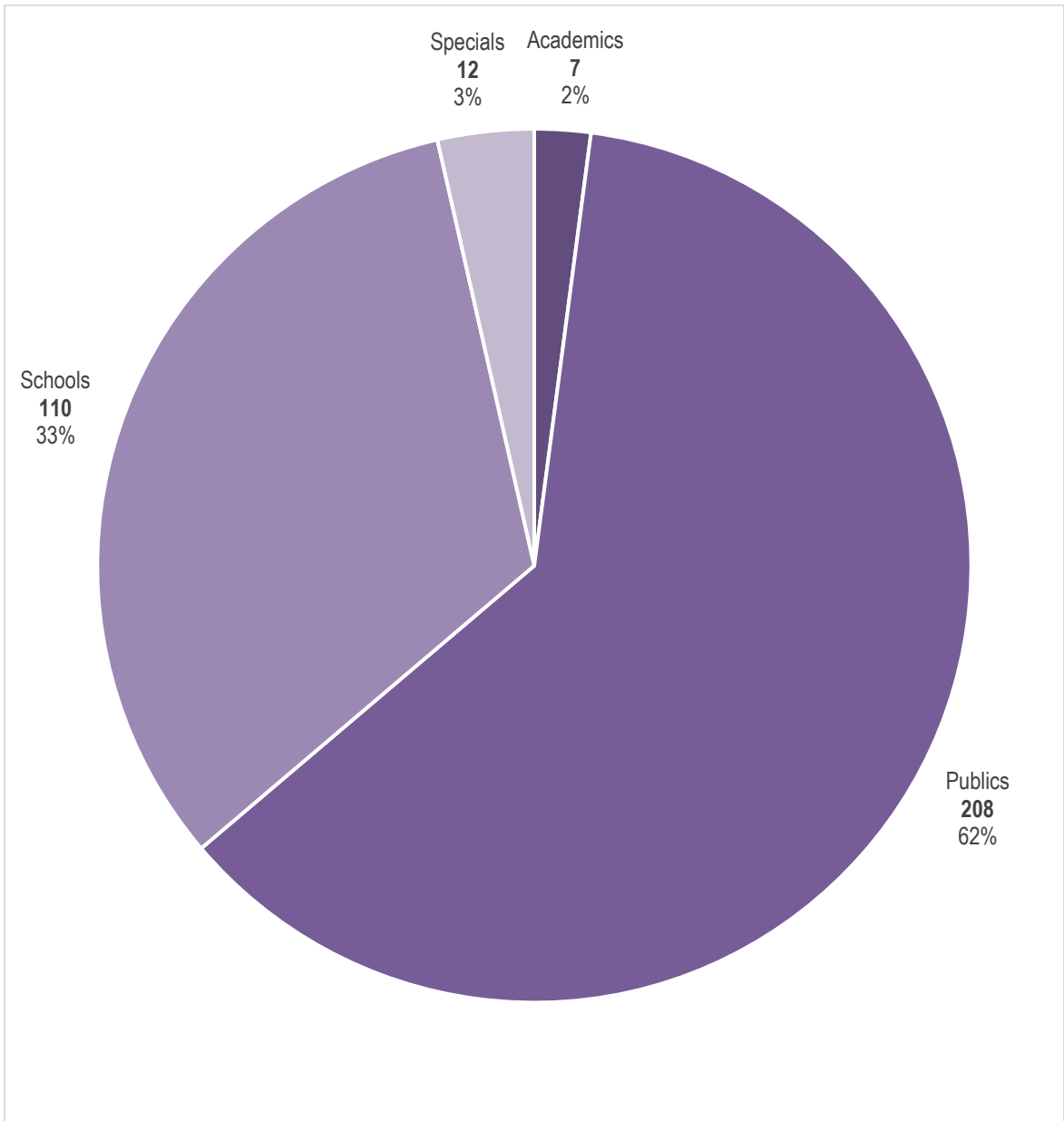


About SHARE

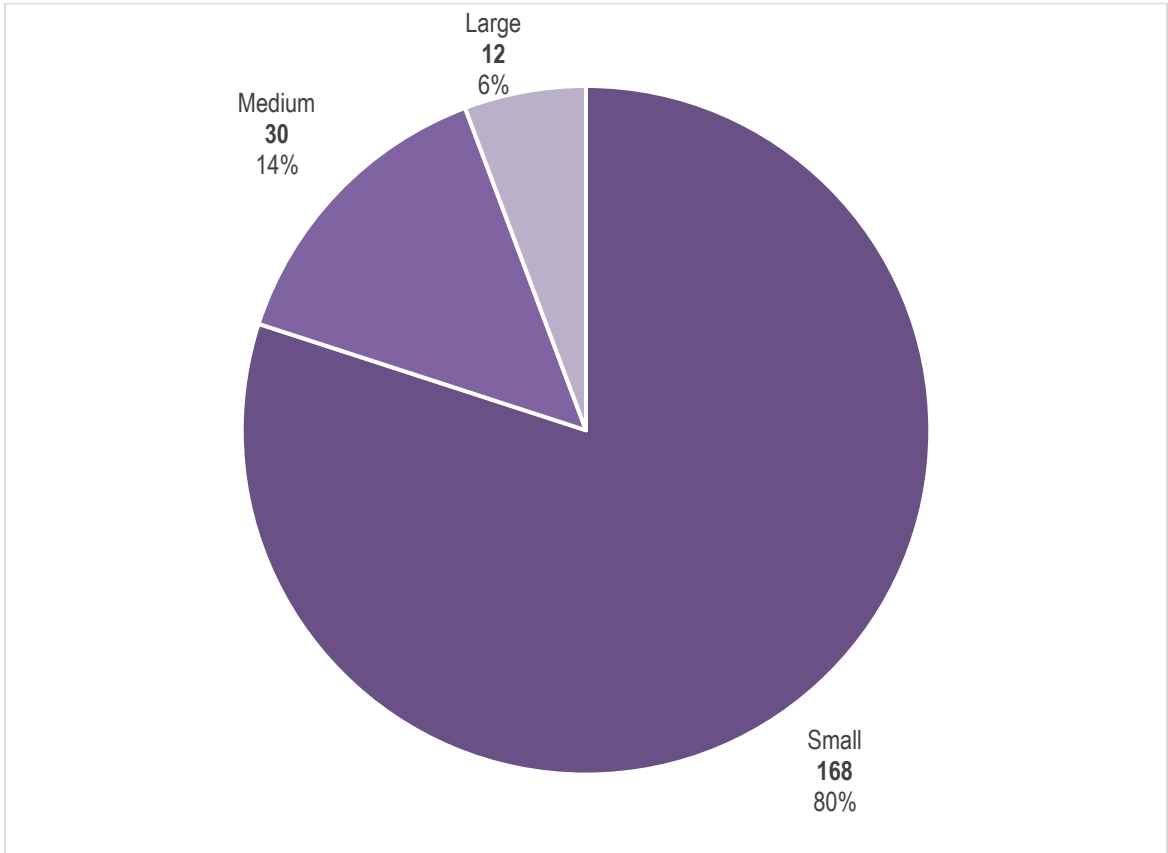
Number of Agencies

Right now, SHARE has 337 member library agencies at 469 locations.



Public Library Sizes

Of public libraries, SHARE serves 80% small libraries, defined as libraries with a population under 10,000.



IHLS and SHARE by the Numbers

	IHLS Agencies	SHARE Agencies
2012	557	296
2013	548	304
2014	537	284
2015	526	307
2016	523	327
2017	520	330
2018	521	334
2019	524	338
2020	524	342
2021	521	337

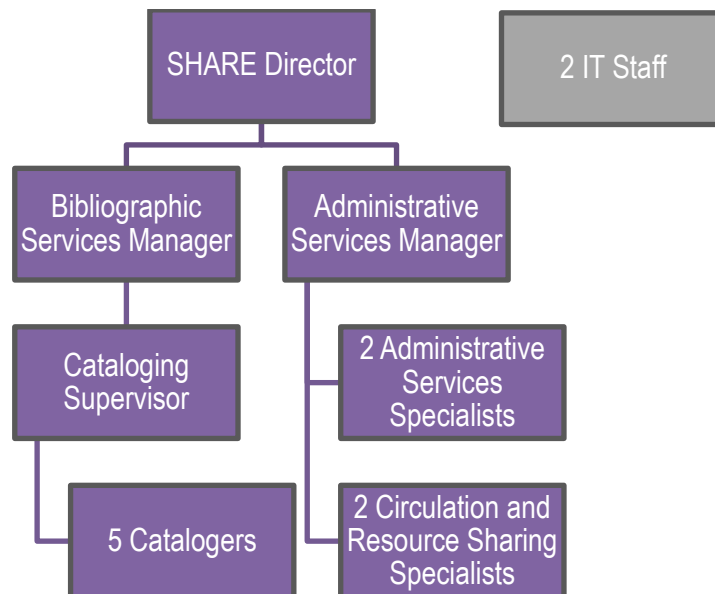
Annual Fees

Annual fees were increased in FY2021, but are still a very affordable option for many libraries.

	Minimum Fee	Maximum Fee	Average Fee
FY2020	\$630	\$37,393	\$2,210
FY2021	\$730	\$45,140	\$2,487
FY2022	\$730	\$44,991	\$2,475

SHARE Staff

SHARE supports 15 FTE's, not including the Cataloging Maintenance Center (CMC) staff.



Financials

- In FY2020, SHARE total expenditures were \$1,672,598.
 - Salaries accounted for \$761,911, or 45.6% of total expenditures.
- In FY2021, SHARE total expenditures were \$1,577,512 (lower due to COVID-19).
 - Salaries accounted for \$779,224, or 49.4% of total expenditures.
- In FY2022, SHARE Budgeted \$2,039,714, or
 - Salaries account for \$994,670, or 48.8% of budget (higher due to two planned retirements).